

Wireless Coverage Across Campus

Version 2.0

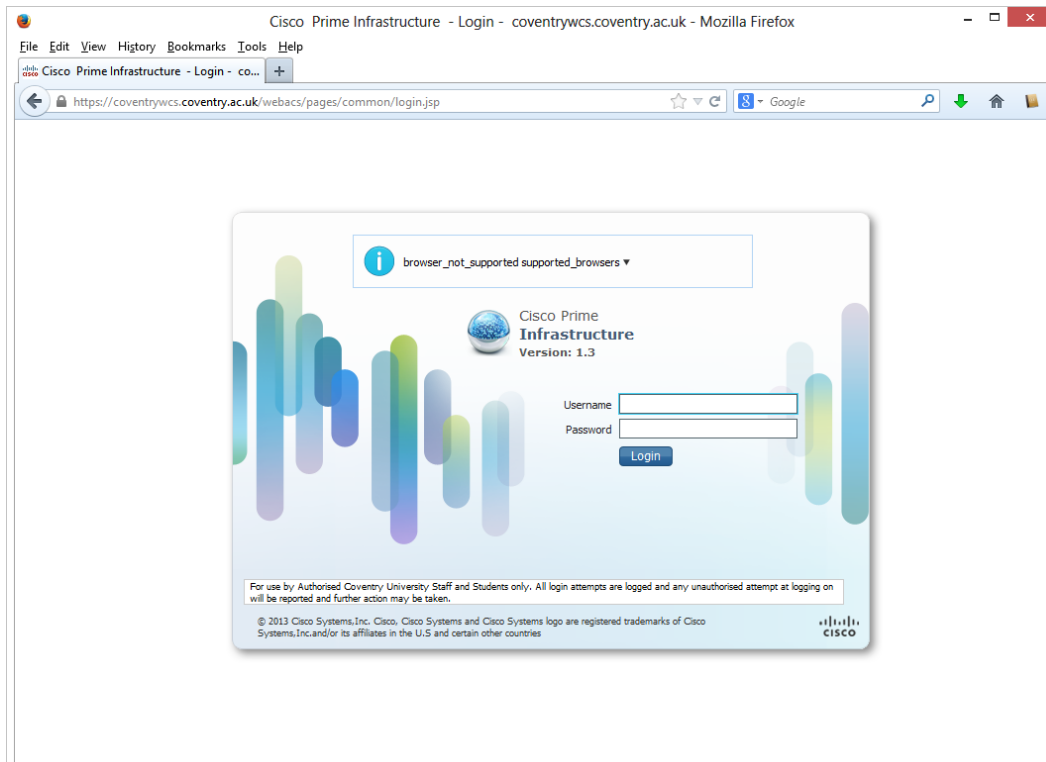
13th March 2014

Introduction

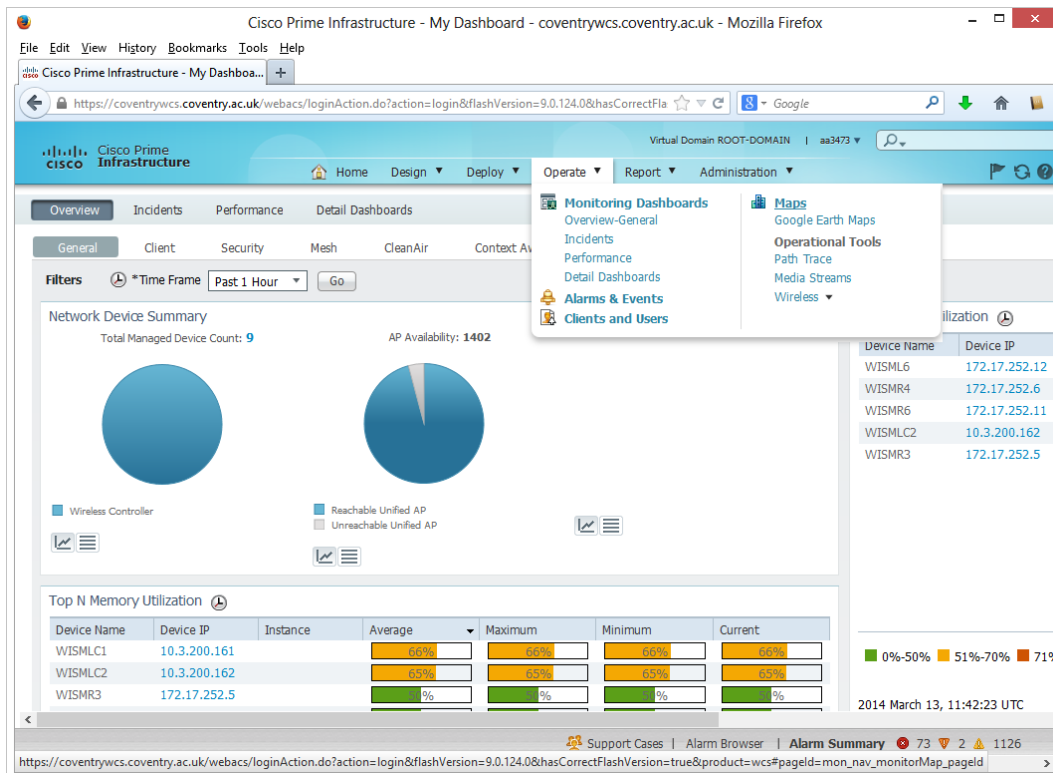
The purpose of this document is to instruct users on how to connect to the Wireless Control System (WCS). Once connected to the service, users will be able to check wireless coverage across campus.

Instructions

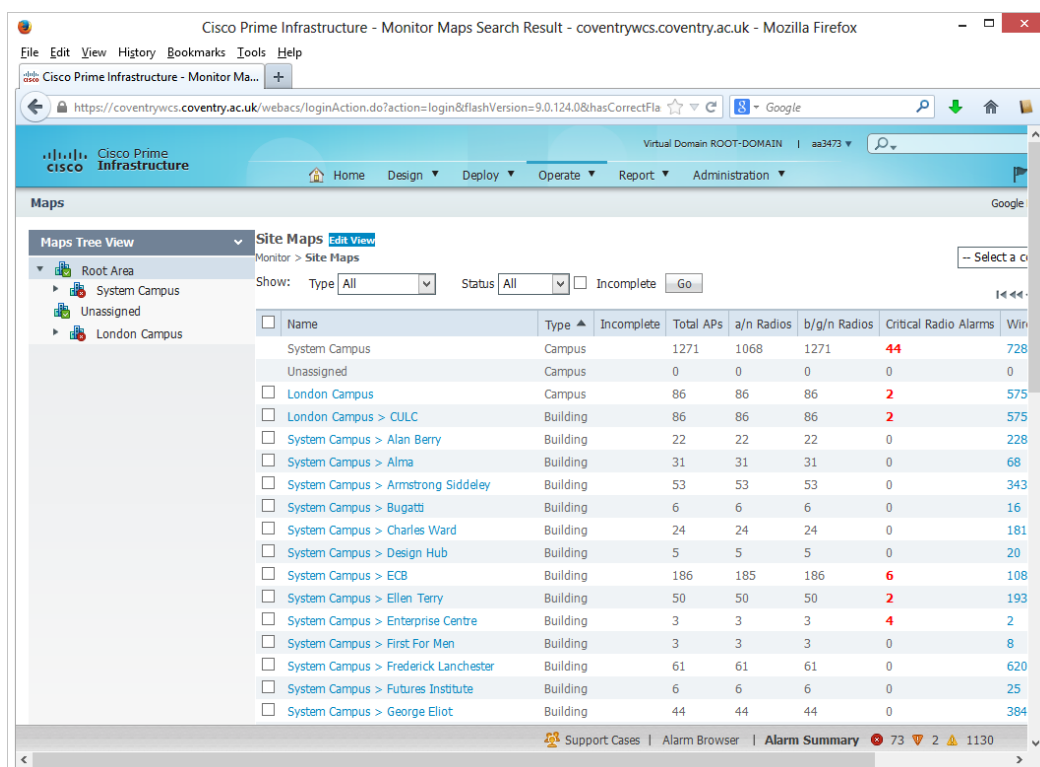
To check the coverage connect to <https://coventrywcs.coventry.ac.uk>



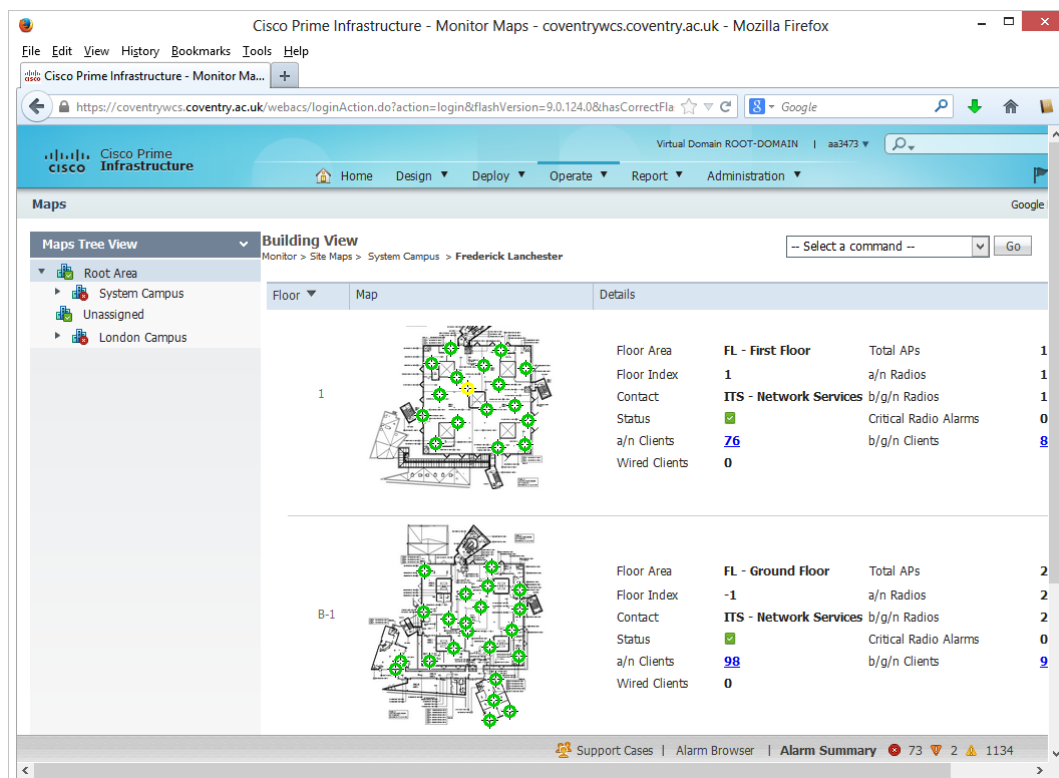
When presented with the Wireless Control System screen please login using your standard University username and password



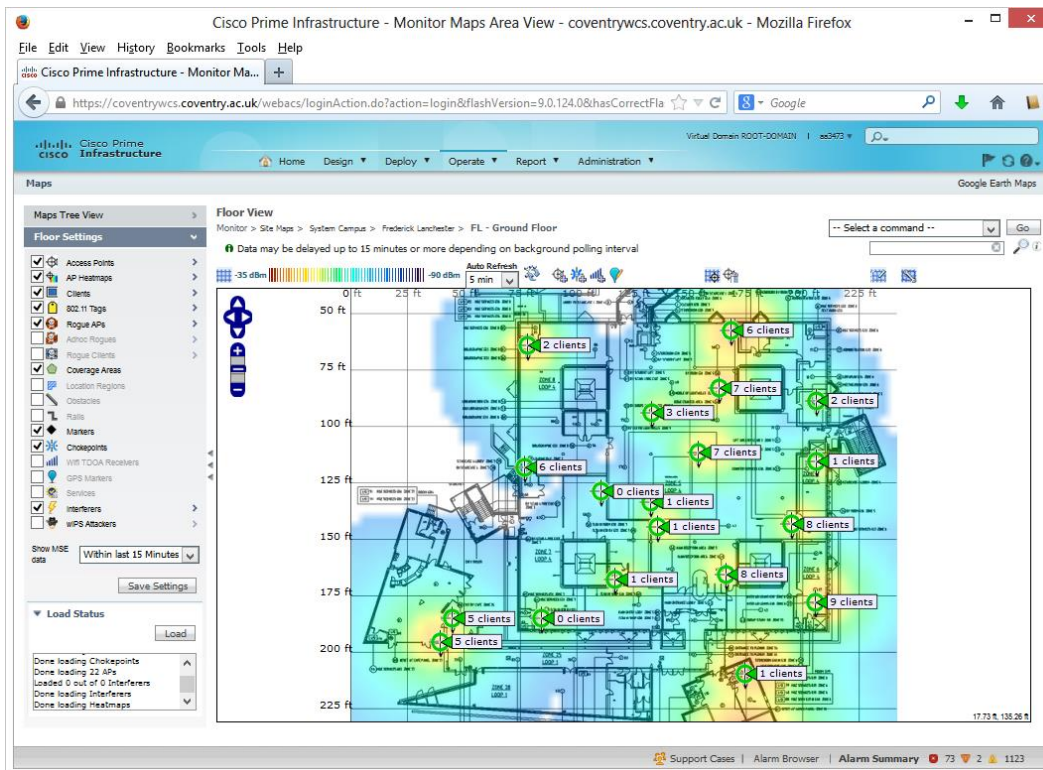
From the overview screen select the Operate menu and select Maps. To return to this screen at any time click on the House symbol.



From the maps screen select the building you wish to check wireless coverage for.



Select the floor you wish to check coverage for. Please note that the Ground floor is referred to as B1



A wireless coverage map will be shown to you. The default display settings should indicate all wireless coverage areas. If the map is not covered by any colour this indicates no wireless coverage.

Please remember to log-out when you have finished.

Please Note: Environmental and Building conditional may affect wireless signals and therefore wireless service may not be available in all locations the system shows coverage.